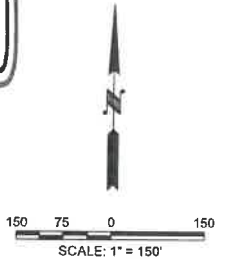


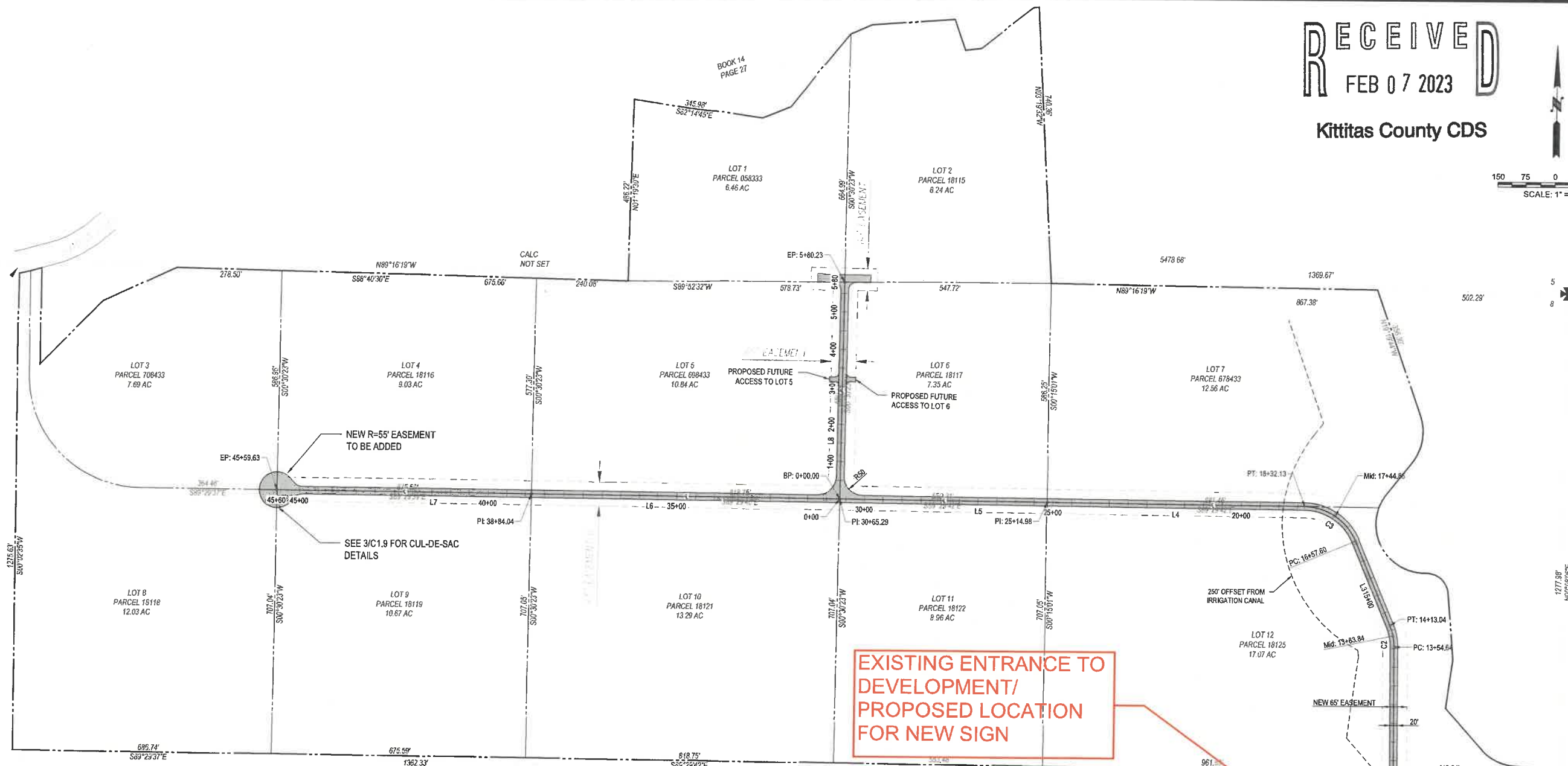
RECEIVED
FEB 07 2023

Kittitas County CDS



ENCASED PIN & CAP
VISITED 12/20/02

ENCASED PIN & CAP
VISITED 07/04



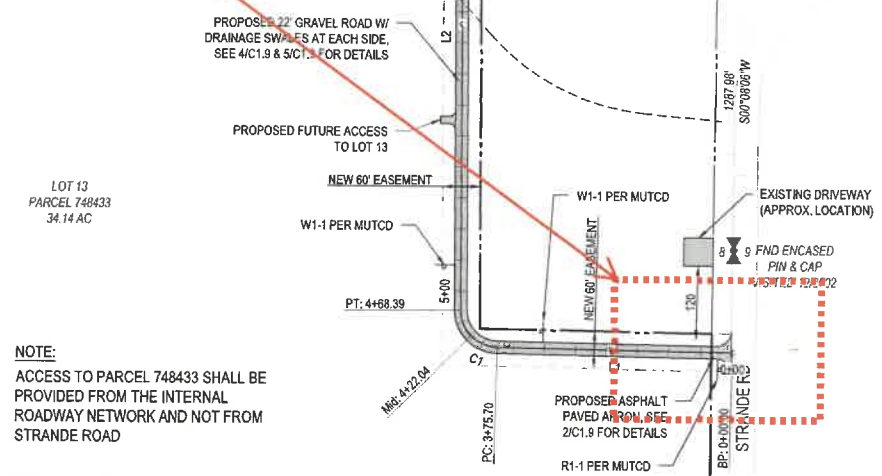
EXISTING ENTRANCE TO DEVELOPMENT/
PROPOSED LOCATION FOR NEW SIGN

SITE PLAN
1" = 150'

LOTS AREAS TABLE	
LOT #	LOT AREA, Ac
1	6.46
2	8.24
3	7.69
4	9.03
5	10.84
6	7.35
7	12.56
8	12.03
9	10.67
10	13.29
11	8.96
12	17.07
13	34.14
AVERAGE	###

LINE TABLE		
LINE #	LENGTH	DIRECTION
L1	375.70	N88° 58' 45.56"W
L2	886.25	N0° 27' 51.68"W
L3	244.56	N22° 46' 22.90"W
L4	662.85	N89° 29' 42.49"W
L5	550.31	N89° 28' 42.48"W
L6	818.75	N89° 29' 40.18"W
L7	675.59	N89° 29' 39.29"W
L8	580.23	N0° 30' 23.32"E

CURVE TABLE			
CURVE #	RADIUS	LENGTH	CHORD DIRECTION
C1	60.00	92.69	N44° 43' 18.62"W
C2	150.00	58.40	N11° 37' 07.29"W
C3	149.87	174.53	N56° 08' 02.70"W



NOTE:
ACCESS TO PARCEL 748433 SHALL BE PROVIDED FROM THE INTERNAL ROADWAY NETWORK AND NOT FROM STRANDE ROAD

1/17/2022 5:04 PM
 C:\projects\simplicivil\cadd\proj\sect\hansen rd\p\hansen rd final.dwg
 Project No: 20.010.dwg

MARK	REVISION DESCRIPTION	BY	APP.	DATE
1	KITTITAS COUNTY REVIEW #1	VT	TS	06/27/22



253.579.2212 | PO Box 745, Moses Lake, WA 98837

DRAWN BY	VT
DESIGN BY	TS
CHECK BY	TS
PROJECT MGR	TS

HANSEN ROAD DEVELOPMENT
ROADWAY PLANS
SITE PLAN

DRAWING NO.	C1.1
PROJECT NO.	20.010
DATE:	06/27/22
SHEET NO.	2 OF 10